

May-June 2016

# DMTA Today

*The Art Feese Memorial Newsletter*



## DMTA Board Members

*President:* Lois Landrum

*Vice President:* Matthew Klein

*Treasurer:* Marilyn Roark

*Parliamentarian:* Trudy Emerick

*Immediate Past President:*

Patrice Koenig

*Achievement Auditions:* Tena Hehn

*Archives:* Martha Coxen

*Attendance:* Ruth Ann Hoffman

*Code of Ethics:* Patrice Koenig

*Constitution and Bylaws:*

Trudy Emerick

*Dallas Piano Solo Competition:*

Margaret Wells & Alex McDonald

*Finance:* Marilyn Roark

*Jazz-Pop Contest:*

Kara Villines & Magen Miller

*Membership:* Paula Stephens

*Newsletter:* Ben Quine

*Notification:* Beth Richards

*Program:* Katie Womack

*Recital Series:* Ruth Myrick

*Scholarship:* Sylvia Taylor

*Sonata-Sonatina/Baroque Festival:*

Hannah Payne

*Student Affiliate:* Carolyn Adams

*Symphonic Festival:* Nancy Burroughs

*Web Coordinator:* Kristen Landrum

*Yearbook:* Stathia Orwig

*Yearbook Roster:* Paula Stephens

*At Large Members:*

Steve Hall

Cathy Lysinger

Stephen Nielson

Jerry Stephens

## From the President...

As we wind down another successful year in DMTA, I want to thank the awesome DMTA Board, for a wonderful

will continue to serve, as they turn over their chairmanships to a new Board.

*"These teachers have served you selflessly..."*



year. These teachers have served you selflessly and in changing conditions. As we have instituted our new website, changed some venues for events, they have stepped in to help other chairmen and worked hard to make things better for you. They have remained fluid and cheerful throughout the year. I know this team

I wish each of you a refreshing and relaxing summer break and a renewed excitement to begin a new year of teaching, sharing, learning and working together in the fall. Thank you for the privilege of serving!

Lois Landrum  
*president*

# DMTA Meetings

*A teacher who wishes to enter students in Sonata-Sonatina-Baroque, Jazz-Pop or Achievement Auditions must attend 3 full general meetings in the previous year, in order to enter students.*



**Wednesday, May 11<sup>th</sup> at 10:00 am**

*Join us for our final meeting of the year. There will also be a special social time starting at 9:30 am.*

**"Alexandre Tansman: Exploring the Life and Music of a Forgotten Composer"**

**Guest: Danny Zelibor**

**Location: Steinway Hall, Dallas**

## Member News

*The following teachers have studio space available:*

Amanda Byars

214-415-1769; a.byars@sbcglobal.net

Kristen Landrum

469-432-0858; landrumpiano@yahoo.com

Piano and Ergonomically Scaled Piano (smaller keys)

\*

**Carmela Couvillon** is a recipient of an MTNA Teacher Enrichment Grant to study Dalcroze at The Institute for Jaques-Dalcroze Education in Bethlehem, Pennsylvania this summer. She will be using this enlightenment to enrich the lives of DMTA teachers at Pedagogy Forum next year.

\*



The husband of DMTA member **Helen Dreher**, Franz Dreher, passed away on his birthday, April 5.





A very special thank you to our 2014-2016 DMTA Board and volunteers! We are all grateful for your invaluable service.

Thank you also, to all who will be part of making our competitions and festivals possible next year!

If you are interested in joining the DMTA leadership team to provide exceptional performance opportunities for our students, please contact:  
Stathia Orwig (469-387-9725; stathia.orwig@gmail.com)  
or Ben Quine (214-455-9105; benquine@gmail.com)

**53  
Years**



**Quality  
Service**

**Phone: 972-276-5479**

**Fax: 972-276-5788**



*"Check our Web Site  
for our inexpensive  
music catalog"*

**123 N. 1ST ST.**

**GARLAND, TEXAS 75040**

**E-Mail:**

**BrowningTrophies@verizon.net**

**Web Site:**

**WWW.BROWNINGTROPHIES.COM**

# UNIVERSITY OF DALLAS

## Summer Music Academy

June 6-10, 2016     
STRINGS • VOICE • PIANO



Set on the University of Dallas campus in Irving, Texas, the UD Summer Music Academy is an opportunity for string, piano and vocal students to immerse themselves in the language of music, expanding their musical abilities and developing their artistic potential. University of Dallas Music

Department faculty will work with students in a variety of settings, including private lessons, master classes, music theory and music history classes, as well as choir and ensembles, creating an intensive, enriching and rewarding musical experience.

[www.udallas.edu/musicacademy](http://www.udallas.edu/musicacademy)



Reminder: Don't  
forget to pay your  
membership dues for  
MTNA & DMTA!

*Thank you!*

## Introducing Miniature Masterpieces

*Beautiful performances of some of the finest piano miniatures for young musicians. Featuring sonatinas, dances, and character pieces in all styles, this collection is sure to be beneficial to your students!*



available on:

*Ben Quire, piano*





# Pedagogy Forum

*Pedagogy Forum would like to thank Kara Villines for hosting the meeting in April! We had good attendance and a lively discussion.*

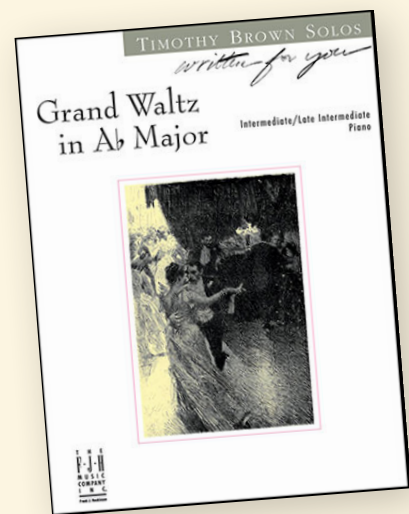
To plan for next next year, please email Carmela (carmelacouvillon@gmail.com) any topics you would like to cover in Pedagogy Forum. Please also contact Carmela if you would like to host a meeting.



The "Grand Waltz in Ab Major" which is dedicated to our organization has been selected for the 2017-2019 Federation List. It was an honor for me to dedicate this work to the Dallas Music Teachers Association and I am thrilled to be beginning my 2nd year in your organization.

I have always had high hopes for this work and it is wonderful news that this work will soon begin its new adventure promoting our organization throughout the Country.

*Timothy Brown*



## High Quality CD & DVD Production

on-site collaborative pianist Dr. Annie Lin

### Pianists & Instrumentalists

Each Recording Tailored to Event Requirements

#### Competitions: Solo & Concerto

(Local, National & International Level)

**Auditions: College/University/Orchestral Music Festivals**

### Exceptional Resources

Two 1920's Steinway 9' Concert & Artist Grands  
Neumann U-87 Microphones/John Hardy Mic Preamp  
MAGIX Sequoia Digital Audio Workstation  
Sony PXW-X70 Camera: HD 1920x1080/4K Video

**One-Stop Convenience for All Your Recording Needs**  
please visit our website for more info

BPCRecording.com  
972.907.2788

**Dr. Steven Hall**  
pianist, teacher,  
recording engineer

Collaborative Pianist

All Instruments

**Dr. Annie Lin**

972.480.0146



[www.drannielin.com](http://www.drannielin.com)

Chamber Music

Recitals

Competitions

Recordings

Master Classes



STEINWAY & SONS

# THE STEINWAY HEIRLOOM COLLECTION

## THE ONLY VINTAGE STEINWAY PIANOS CERTIFIED BY STEINWAY & SONS



Vintage Steinway pianos are among the world's most treasured possessions. They are eagerly sought by passionate piano lovers, collectors and investors, and prized for their unique beauty and the enduring warmth and power of the Steinway sound.

The Steinway Heirloom Collection was created to clearly distinguish the finest vintage Steinway pianos in the world. The restoration quality and authenticity of these magnificent instruments are 100% certified by Steinway & Sons, restored in our factory where the piano was first born.

Whether a Steinway Heirloom piano requires custom refinishing, or replacement of the action or soundboard, only 100% genuine Steinway parts are allowed. When completed, each Steinway Heirloom piano proudly carries the same warranty as a new Steinway, and is distinguished by a medallion placed inside the lid and a signed Certificate of Restoration



STEINWAY & SONS

NORTH TEXAS • HOUSTON

FOR MORE INFORMATION ABOUT THE STEINWAY HEIRLOOM COLLECTION,  
CALL (214) 526-1853 OR VISIT [WWW.STEINWAYPIANOS.COM](http://WWW.STEINWAYPIANOS.COM)



# Alex Smith Piano Services

## My Services

- standard, pitch raise and concert tuning
- deep cleaning
- repair
- regulation
- hammer reshaping and voicing
- piano evaluation

*Welcome! I'm Alex and I service the DFW Metroplex, and surrounding area. I supply an extensive range of piano services.*

*Whether your instrument is brand new, pre-owned or a cherished family heirloom, it takes a vital place in the home, studio or church and it is my pleasure and honor to be entrusted with its care.*



*My clients include concert pianists, private individuals, teachers, schools, churches and universities. Whatever your requirements, please feel free to contact me to discuss your needs.*

*I look forward to hearing from you!*



- **Regular piano tuning** - ideally tune twice a year with the change of seasons to keep your piano at its best all year round
- **Deep cleaning and action lubrication** – Years of dust and debris can compromise your piano's performance. This service not only removes all dust and debris but also lubricates the whole action ensuring your piano plays at its very best. All my clients notice the difference in performance in their piano.
- **Notes sticking or not sounding** - one of the most common problems and usually quickly rectified
- **ANY OTHER QUESTIONS OR PIANO ACTION ISSUES?** - Call me. I'm always happy to advise and help

***Thank you so much for your dedication and enthusiasm on the work you do for us. We are most pleased and happy with your help.***

Dr. M. Camacho, Dean Fain College of fine Arts, MSU

***Thank you. It was a pleasure to play on!***

Steinway D prepared and tuned for Alessio Bax, international concert pianist

***We couldn't hope for a better person to help Soham buy his first piano!***

Brinda and Sanjoy – Private Client

***The piano sounds wonderful! The touch also feels much better. I love it!!***

Hammer reshaping and voicing, deep cleaning, tuning - President FMTA

***The Steinway 'D' is truly magnificent! The regulated action is lighter and the voicing and hammer shaping he did have expanded the coloristic range of which the piano is capable. Alex has taken it to a level better than when we first chose it.***

Regulation, hammer reshaping, voicing, deep cleaning, tuning to MSU primary performance concert grand - Distinguished Chair of Piano - MSU

***Alex saved my day or should I say 'recital'. My poorly tuned piano had just been tuned less than two weeks prior to today. It truly sounds like a different piano! I asked Alex to be my permanent technician***

Short notice tuning - Teacher - PMTA

**Tel: 469-321-1973**

**E-mail: alexsmithpianoservices@gmail.com**





collora  
PIANO

1451 Wycliff Ave  
Dallas, TX 75207  
214-351-6636  
[www.ColloraPiano.com](http://www.ColloraPiano.com)



# Awards & Competitions

## 2016 Dallas Symphonic Festival

### WIND DIVISION WINNERS

Grand Prize Winner: Christine Kim

#### ELEMENTARY - Sonata/Piece Division

- 1<sup>st</sup> Eunah Kim
- 2<sup>nd</sup> Ayne Park

#### ELEMENTARY - Concerto Division

- 1<sup>st</sup> Danny Choi
- 2<sup>nd</sup> Laurel Beck
- 3<sup>rd</sup> Hannah Lee

#### JUNIOR - Sonata/Piece Division

- 1<sup>st</sup> Subee Kim
- 2<sup>nd</sup> Daniel Cho
- 3<sup>rd</sup> Erica Choi
- 4<sup>th</sup> Eden Kim
- 5<sup>th</sup> Amanda Choi
- 6<sup>th</sup> Natalie Park
- HM Grace Shao

#### JUNIOR - Concerto Division

- 1<sup>st</sup> Subin Cho
- 2<sup>nd</sup> Chanhyaing Park
- 3<sup>rd</sup> Johnny Choi
- 4<sup>th</sup> Hannah Kim
- 5<sup>th</sup> Hanna Chang
- 6<sup>th</sup> Leann Lee
- HM Sungwoo Kim

#### SENIOR - Sonata/Piece Division

- 1<sup>st</sup> Seokhyin Bae
- 2<sup>nd</sup> Yeongjue Jo
- 3<sup>rd</sup> Joy Penj
- 4<sup>th</sup> Brian Kalo
- 5<sup>th</sup> Serena Suppakkul
- 6<sup>th</sup> Sara Jeony
- HM Daniel Han
- HM Rachel Choi
- HM Seoyon Lee

### SENIOR - Concerto Division

- 1<sup>st</sup> Brian Cho
- Johnathan Chang
- Christine Kim
- 2<sup>nd</sup> Dooyaing Cho
- 3<sup>rd</sup> Julie Vest
- 4<sup>th</sup> Noah Yi
- 5<sup>th</sup> Kun Choi
- 6<sup>th</sup> Annabelle Kim
- HM Sarah Han
- HM Ludia Hong
- HM Jisu Jung
- HM Julia Kim

### STRING DIVISION WINNERS

Grand Prize Winner: Sarah Jiang

#### ELEMENTARY I - Sonata/Piece Division

- 1<sup>st</sup> Varun Mukund (Nicolette Solomon)
- 2<sup>nd</sup> John Yang (Orit Beder)
- 3<sup>rd</sup> Andrew Lu (Orit Beder)
- 4<sup>th</sup> Max Hall (Steven Hall)

#### ELEMENTARY I - Concerto Division

- 1<sup>st</sup> Lauren Yoon (Nicolette Solomon)
- 2<sup>nd</sup> Ashley Chen (Jina Lee)

#### ELEMENTARY II - Sonata/Piece Division

- 1<sup>st</sup> Anais Feller (Jan Sloman)
- 2<sup>nd</sup> Steven Lu (Charles Krigbaum)
- 3<sup>rd</sup> Austin Topper (Jungshin Lewis)
- 4<sup>th</sup> Irene Chao (Ron Houston)
- 5<sup>th</sup> Lauren Lee (Ron Houston)
- 6<sup>th</sup> Elise Wang (Zhan Wang)

#### ELEMENTARY II - Concerto Division

- 1<sup>st</sup> Ray Chu (Nicolette Solomon)
- 2<sup>nd</sup> Elizabeth Boyston (Jan Sloman)
- 3<sup>rd</sup> Sophia Wang (Zhan Wang)
- 4<sup>th</sup> Natalie Druffner (Nicolette Solomon)
- 5<sup>th</sup> Julia Luo (Victor Rupert)
- 6<sup>th</sup> Emma Zhou (Cheryl Wells)

# Awards & Competitions

## JUNIOR - Sonata/Piece Division

- 1<sup>st</sup> Elizabeth Wei (Jan Sloman)
- 2<sup>nd</sup> Clara Kim (Jan Sloman)
- 3<sup>rd</sup> Daniel Liang (Zhan Wang)
- 4<sup>th</sup> Victor Tsao (Zhan Wang)
- 5<sup>th</sup> Pranav Mukund (Nicolette Solomon)

## JUNIOR - Concerto Division

- 1<sup>st</sup> Claire Druffner (Jungshin Lewis)
- 2<sup>nd</sup> Kaeon Cho (Jina Lee)
- 3<sup>rd</sup> Matthew Ho (Jan Sloman)
- 4<sup>rd</sup> Nikki Naghavi (Nicolette Solomon)
- 5<sup>th</sup> Jackie Liu (Ron Houston)
- 6<sup>th</sup> Yenna Lee-Gannon (Ron Houston)

- HM Andrew Wong (Jina Lee)
- HM Andy Qiao (Jan Sloman)
- HM Caleb Park (Philip Taggart)

## SENIOR - Sonata/Piece Division

- 1<sup>st</sup> Tyler Jacoby (Ron Houston)
- 2<sup>nd</sup> Yongha Jung (Ron Houston)
- 3<sup>rd</sup> Nathan Le (Ron Houston)

## SENIOR - Concerto Division

- 1<sup>st</sup> Sarah Jiang (Ron Houston)
- Johnathan Wu (Jan Sloman)
- Megan Lin (Jan Sloman)
- 2<sup>nd</sup> Jeanie Hwang (Ron Houston)
- 3<sup>rd</sup> Alan Bouda (Philip Lewis)
- 4<sup>th</sup> Kevin Bai (Charles Krigbaum)
- 5<sup>th</sup> Shaunessey Renker (Ronald Neal)
- 6<sup>th</sup> Samantha Liu (Cheryl Wells)
- HM Daniel Kong (Philip Lewis)

## PIANO DIVISION WINNERS

Grand Prize Winner: Eric Chen

## ELEMENTARY I (A) - Sonatina/Sonata Division

- 1<sup>st</sup> Melody Guo (Yi-Fan Liu)
- 2<sup>nd</sup> Eriz Zian (Yi-Fan Liu)
- 3<sup>rd</sup> Matthew Wooton (Dr. Jiyun Yoo)
- 4<sup>th</sup> Minyang Xu (Di Wu)
- 5<sup>th</sup> Fiona Wang (Violetta Zharkova)
- 6<sup>th</sup> Ariel Huang (Yi-Fan Liu)

## ELEMENTARY I (B) - Sonatina/Sonata Division

- 1<sup>st</sup> Kaitlyn Ouyang (Violetta Zharkova)
- 2<sup>nd</sup> Matthew Martinelli (Sam Wong)
- 3<sup>rd</sup> Jaden Ouyang (Violetta Zharkova)
- 4<sup>th</sup> Rory Lee (Yi-Fan Liu)
- 5<sup>th</sup> Amanda Yi (Yi-Fan Liu)
- 6<sup>th</sup> Lucas Pei (Dr. Jiyun Yoo)

## ELEMENTARY I - Concerto Division

- 1<sup>st</sup> Amy Xu (Ruth Ann Hoffman)
- 2<sup>nd</sup> Oliver Chen (Dr. Alex McDonald)
- 3<sup>rd</sup> Andy Xu (Ruth Ann Hoffman)
- 4<sup>th</sup> Eva Wang (Di Wu)
- 5<sup>th</sup> Claire Cai (Di Wu)
- 6<sup>th</sup> Joanna Jia (Marcy McDonald)

## ELEMENTARY II (A) - Sonatina/Sonata Division

- 1<sup>st</sup> James Liu (Lisheng Xu)
- 2<sup>nd</sup> Dawson Yao (Yi-Fan Liu)
- 3<sup>rd</sup> Neha Singaravelan (April Boukadoun)
- 4<sup>th</sup> Licheng Yi (Dr. Alex McDonald)
- 5<sup>th</sup> Isabel Martinez (Yi-Fan Liu)
- 6<sup>th</sup> Sarah Rosen (Dr. Jiyun Yoo)



# Awards & Competitions

## **ELEMENTARY II (B) - Sonatina/Sonata**

### **Division**

1 <sup>st</sup>	James Tien	(Dr. Catharine Lysinger)
2 <sup>nd</sup>	Audrey Tan	(Violetta Zharkova)
3 <sup>rd</sup>	William Huang	(Sam Wong)
4 <sup>th</sup>	William Lee	(Dr. Mary Humm)
5 <sup>th</sup>	Darcy Yin	(Yi-Fan Liu)
6 <sup>th</sup>	Emily Hu	(Yi-Fan Liu)

## **ELEMENTARY II (C) - Sonatina/Sonata**

### **Division**

1 <sup>st</sup>	Emma Luo	(Dr. Grace Long)
2 <sup>nd</sup>	Jon-Kenleigh Thiessen	(Dr. Mary Humm)
3 <sup>rd</sup>	Kevin Lu	(Sam Wong)
4 <sup>th</sup>	Jodi Lin	(Marcy McDonald)
5 <sup>th</sup>	Akash Nair	(Bret Serrin)
6 <sup>th</sup>	Nina Huang	(Violetta Zharkova)

## **ELEMENTARY II - Concerto Division**

1 <sup>st</sup>	Philip Ma	(Yi-Fan Liu)
2 <sup>nd</sup>	Grace Tran	(Dr. Alex McDonald)
3 <sup>rd</sup>	Allyson Chen	(Sam Wong)
4 <sup>th</sup>	Ella Tran	(Dr. Alex McDonald)
5 <sup>th</sup>	Alena Zhang	(Yi-Fan Liu)
6 <sup>th</sup>	Theresa Tran	(Dr. Mary Humm)

## **INTERMEDIATE (A) - Sonatina/Sonata**

### **Division**

1 <sup>st</sup>	Esther Pham	(Dr. Alex McDonald)
2 <sup>nd</sup>	Chritina Sun	(Yi-Fan Liu)
3 <sup>rd</sup>	Jeffrey Qian	(Yi-Fan Liu)
4 <sup>th</sup>	Eliel Diaz	(Angela Favazza)
5 <sup>th</sup>	Andrew Tao	(Eva Goh)
6 <sup>th</sup>	Karen Huang	(Dr. Grace Long)
HM	Joyce Jiang	(Yi-Fan Liu)
HM	Victor Tsao	(Sam Wong)

## **INTERMEDIATE (B) - Sonatina/Sonata**

### **Division**

1 <sup>st</sup>	Tiffany Hwang	(Dr. Annie Lin)
2 <sup>nd</sup>	Vatsal Vemuri	(Bret Serrin)
3 <sup>rd</sup>	Eric Wang	(Dr. Alex McDonald)
4 <sup>th</sup>	Isabella Tao	(Sam Wong)
5 <sup>th</sup>	Claire Song	(Miyoun Jang)
6 <sup>th</sup>	Catherine Wang	(Yi-Fan Liu)

HM	Ishan Puri	(Bret Serrin)
HM	Lucy Yang	(Dr. Catharine Lysinger)
HM	Grace Xu	(Cheryl Chen)

## **INTERMEDIATE - Concerto Division**

1 <sup>st</sup>	Claire Chiang	(Dr. Catharine Lysinger)
2 <sup>nd</sup>	Regina Lin	(Dr. Alex McDonald)
3 <sup>rd</sup>	Angela Yi	(Yi-Fan Liu)
4 <sup>th</sup>	Perren-Luc Thiessen	(Dr. Mary Humm)
5 <sup>th</sup>	Nicole Chong	(Dr. Alex McDonald)
6 <sup>th</sup>	Charlie Zhang	(Kevin Gunter)

## **JUNIOR (A) - Sonata Division**

1 <sup>st</sup>	Shiv Yajnik	(Kevin Gunter)
2 <sup>nd</sup>	Joye Chen	(Yi-Fan Liu)
3 <sup>rd</sup>	Richard Liu	(Dr. Christina Long)
4 <sup>th</sup>	James Shiao	(Dr. Grace Long)
5 <sup>th</sup>	Jonathan Li	(Yi-Fan Liu)
6 <sup>th</sup>	Grace Li	(Eva Goh)
HM	Brandon Zhao	(Yi-Fan Liu)
HM	Ameya Khanapurkar	(Bret Serrin)

## **JUNIOR (B) - Sonata Division**

1 <sup>st</sup>	Jessica Zhang	(Yi-Fan Liu)
2 <sup>nd</sup>	Esther Shim	(Dr. Alex McDonald)
3 <sup>rd</sup>	Amy Danjul	(Dr. Christina Long)
4 <sup>th</sup>	Samuel He	(Andrey Ponochevny)
5 <sup>th</sup>	Amanda Nguyen	(Yi-Fan Liu)
6 <sup>th</sup>	Chloe Feller	(Dr. Mary Humm)
HM	Lily Zhou	(Dr. Grace Long)
HM	Pranay Varada	(Matthew Kline)

## **JUNIOR - Concerto Division**

1 <sup>st</sup>	Wesley Brigner	(Dr. Steven Hall)
2 <sup>nd</sup>	Mary Chen	(Dr. Mary Humm)

## **SENIOR (A) - Sonata Division**

1 <sup>st</sup>	Jason Zhu	(Dr. Alex McDonald)
2 <sup>nd</sup>	Ken Nomura	(Hwa Jung Lee)
3 <sup>rd</sup>	Christine Ji	(Yi-Fan Liu)
4 <sup>th</sup>	Thomas Truong	(Yi-Fan Liu)
5 <sup>th</sup>	Apsaline Douglas	(Kevin Gunter)
6 <sup>th</sup>	Tiffany Li	(Yi-Fan Liu)
HM	Sean Chen	(Bret Serrin)

# Awards & Competitions

## SENIOR (B) – Sonata Division

1 <sup>st</sup>	Sean Wang	(April Boukadoum)
2 <sup>nd</sup>	Brent He	(Yi-Fan Liu)
3 <sup>rd</sup>	Jason Lin	(Dr. Alex McDonald)
4 <sup>th</sup>	Michael Lukowicz	(Liudmila Georgievskaya)
5 <sup>th</sup>	Vanessa Sun	(Yi-Fan Liu)
6 <sup>th</sup>	Samuel Zhang	(Eva Goh)
HM	Kimball Deaguero	(Dr. Catharine Lysinger)

## SENIOR - Concerto Division

1 <sup>st</sup>	Patrick Magee	(Marcy McDonald)
	Eric Chen	(Dr. Catharine Lysinger)
	Daniel Che	(Yi-Fan Liu)
2 <sup>nd</sup>	Jihae Choi	(Dr. Jiyun Yoo)
3 <sup>rd</sup>	Wani Zhang	(Yi-Fan Liu)
4 <sup>th</sup>	Cynthia Gu	(Dr. Catharine Lysinger)
5 <sup>th</sup>	Alexis Ren	(Dr. Catharine Lysinger)
6 <sup>th</sup>	Josephine Chiu	(Marcy McDonald)

## TMTA Original Composition Contest Winners

### 5th Grade Solo:

1 <sup>st</sup>	Jenna Smith	(Nancy Burroughs)
-----------------	-------------	-------------------

### 6th-7th Grades Solo:

1 <sup>st</sup>	Shiv Yajnik	(Kevin Gunter)
-----------------	-------------	----------------

### 5th-8th Grades Ensemble:

2 <sup>nd</sup>	Pranay Varada	(Matthew Kline)
-----------------	---------------	-----------------

### 9th-12th Grades Ensemble:

3 <sup>rd</sup>	Brock Bagelman	(Carol A. Crisp)
-----------------	----------------	------------------

## SMU Institute for Young Pianists

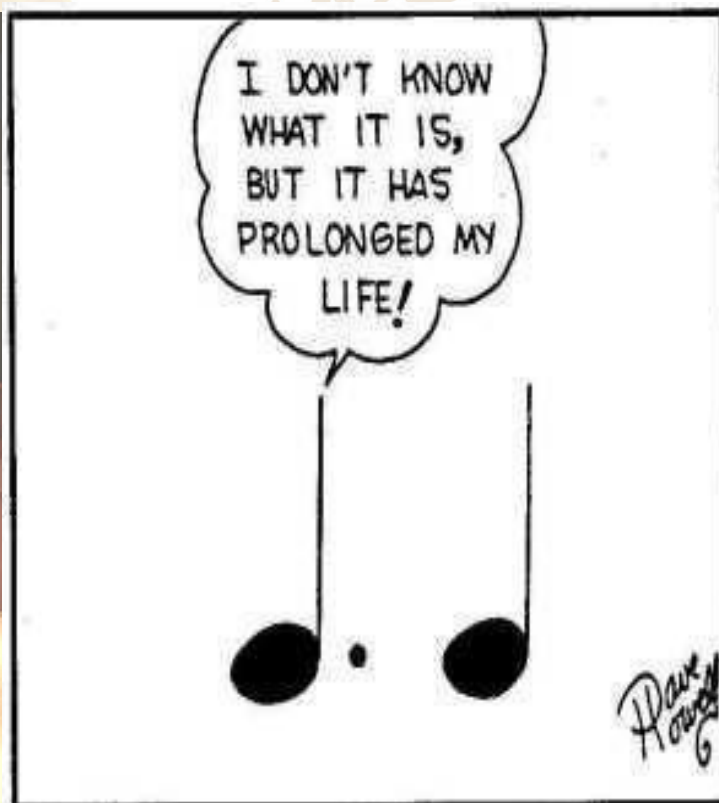
An intensive performance program for pre-collegiate piano students, July 10-16, 2016

Guest artists: Jennifer Hayghe • Alex McDonald • Andrey Ponochevny

Artist faculty: Carol Leone • Alfred Mouledous • Catharine Lysinger

Daily private lessons • Daily master classes • Faculty concerts Student concerts • Ensemble elective

Institute directors: Catharine Lysinger and Kevin Gunter  
for more information contact Dr. Cathy Lysinger  
at [lysinger@smu.edu](mailto:lysinger@smu.edu) or 214.768.1682  
or visit <http://blog.smu.edu/youngpianists/>

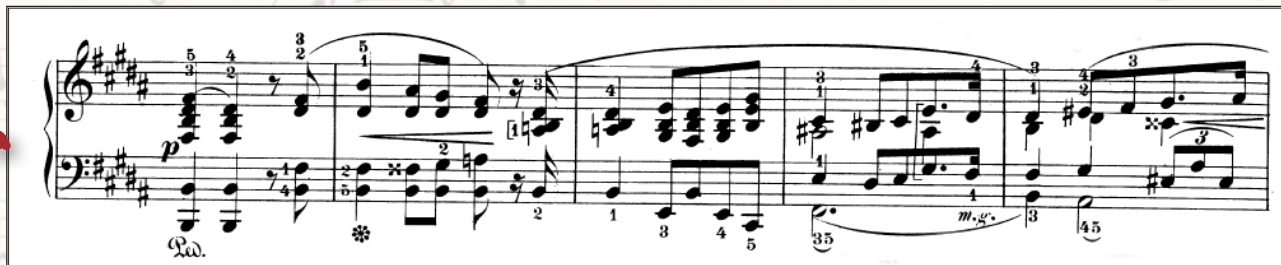




# Score Challenge: Just a Fantasy

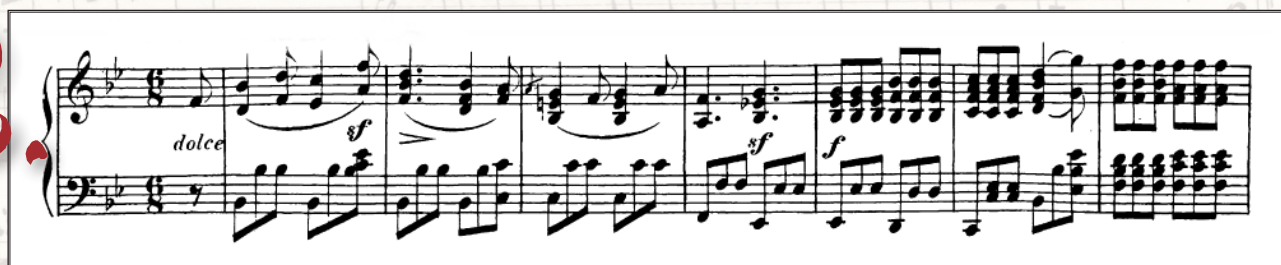
Identify the title of each excerpt below.

1.



Title: \_\_\_\_\_

2.



Title: \_\_\_\_\_

3.



Title: \_\_\_\_\_

4.



Title: \_\_\_\_\_



## *DMTA Today*

*a publication of the Dallas Music Teachers' Association • [www.dallasmta.org](http://www.dallasmta.org)*

*Dallas Music Teachers' Association does not endorse and makes no representations, explicit or otherwise concerning any advertiser in this publication, their content or any products or services which they offer. Reference to any specific commercial product, process, or service by trade name, trademark, or otherwise does not represent endorsement or recommendation by DMTA.*

*Ben Quine, Editor*